



An **Odds On Promotions** White Paper

6195 Ridgeview Court, Suite E  
Reno, NV 89519  
888.876.9832  
<http://www.cleanhandskiosk.com>

## Clean Hands Kiosk Pump Retrofit

*By Benjamin Nash  
IT*

**August 31, 2020**

## Contents

Overview.....	3
Required Tools and Materials .....	3
Remove Pump Assembly Cover – Video Timecode 00:24.....	3
Remove Dispenser Assembly – Video Timecode 01:16 .....	4
Disconnect Power – Video Timecode 02:50.....	4
Remove Sensor Assembly – Video Timecode 03:00 .....	5
Disconnect Wiring Harness – Video Timecode 03:20 .....	5
Remove Pump Assembly – Video Timecode 3:39 .....	6
Disconnect Hand Sanitizer Output Hose – Video Timecode 04:23.....	6
Remove Pump Assembly, Sensor Assembly, and Button Assembly – Video Timecode 04:38 .....	7
Reinstall Dispenser Assembly – Video Timecode 04:47.....	7
Remove Plate – Video Timecode 05:31 .....	8
Disconnect Dispenser Hose – Video Timecode 06:14.....	8
Remove Motor Control and LED1 Wiring Harness – Video Timecode 06:26 .....	9
Disconnect LED1 from LED Array – Video Timecode 08:40 .....	9
Install New Pump Assembly – Video Timecode 09:36.....	10
Install Sensor – Video Timecode 11:20 .....	10
Attach Output Hose to Dispenser – Video Timecode 12:39 .....	11
Disconnect Supply Line – Video Timecode 13:36 .....	11
Connect New Supply Line – Video Timecode 15:04.....	12
Connect New LED Wiring Harness – Video Timecode 15:39 .....	12
Install Power Supply Wiring Harness – Video Timecode 17:13.....	13
Cleanup Wiring – Video Timecode 17:53 .....	13
Prime New Pump – Video Timecode .....	14

## Overview

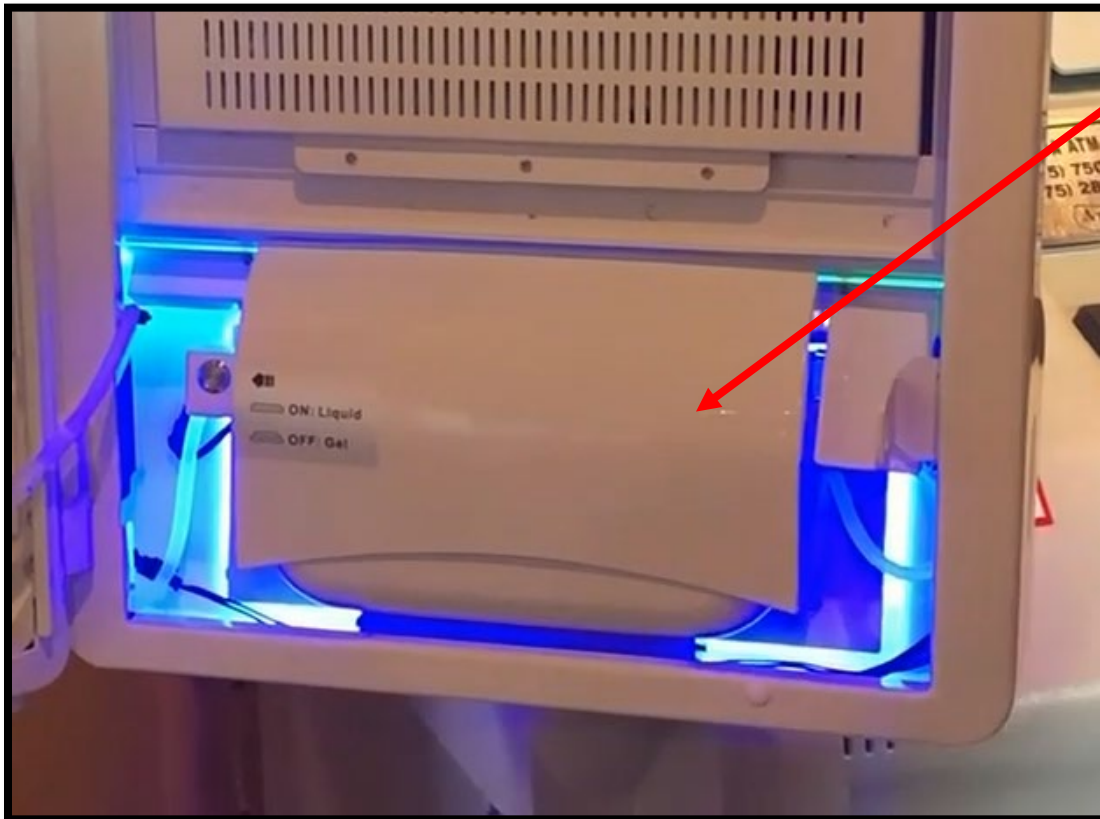
The purpose of this document is to provide written instruction on how to perform the Clean Hands Kiosk pump retrofit procedure. It is highly recommended to watch the instructional video available on the Clean Hands Kiosk website: <https://www.cleanhandskiosk.com/downloads> This document will reference the instructional video and provide time codes for each step.

## Required Tools and Materials

- 7mm socket
- 7/32 socket
- #2 Philips head screwdriver
- Needle nose pliers
- Regular pliers
- Wire cutters
- Zip ties
- Clean Hands Kiosk Retrofit Kit

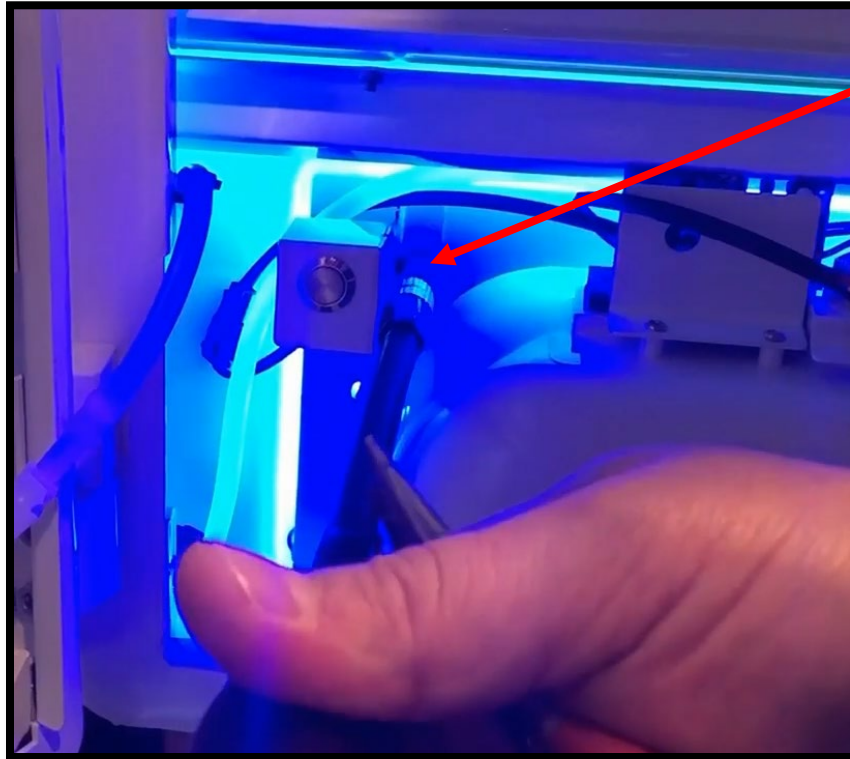
## Remove Pump Assembly Cover – Video Timecode 00:24

Remove the pump assembly cover by removing two 7mm nuts. There is one 7mm nut on each side of the cover.



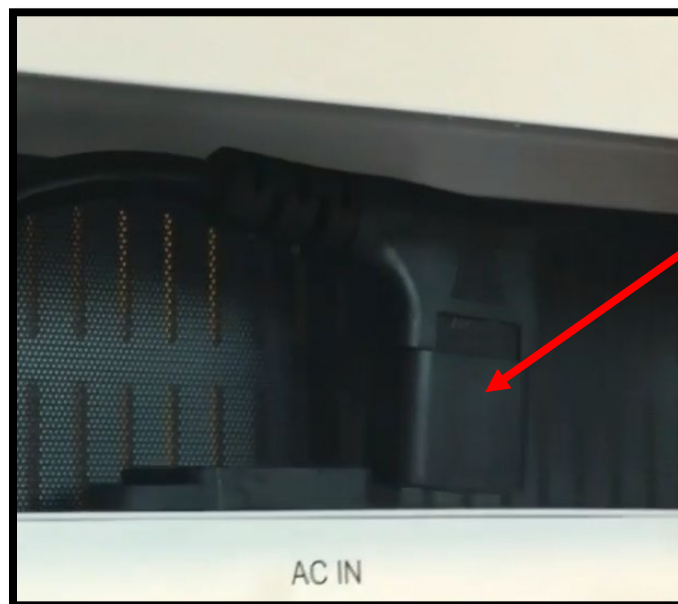
**Remove Dispenser Assembly – Video Timecode 01:16**

Remove the dispenser assembly by removing 4 remaining 7mm nuts. Two on each side of the dispenser assembly housing.



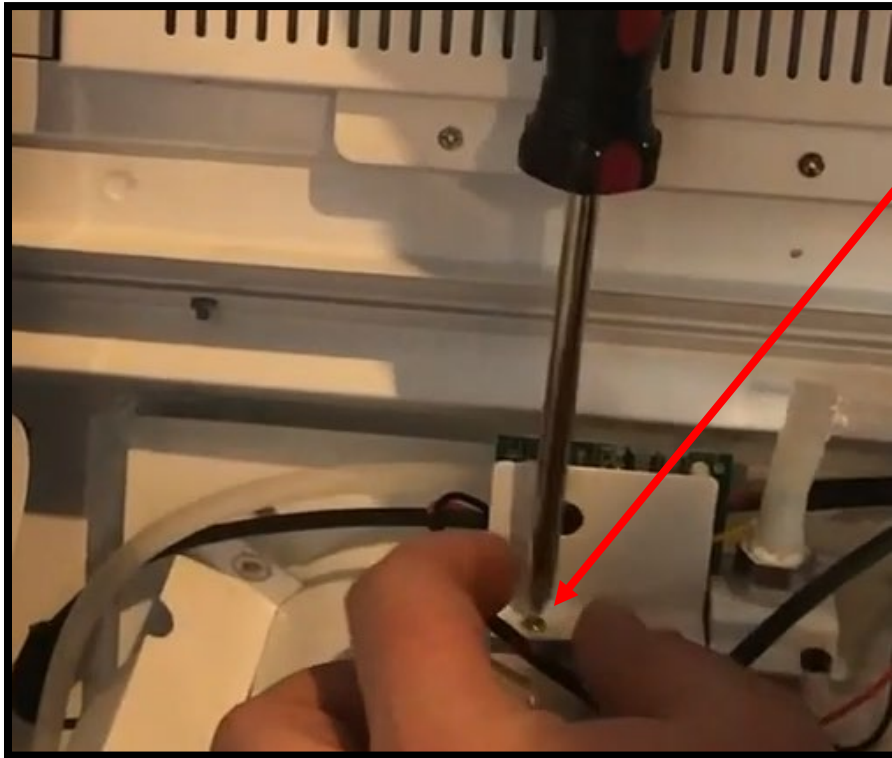
**Disconnect Power – Video Timecode 02:50**

Disconnect power by unplugging the power plug from the power supply to safely work with electrical components.



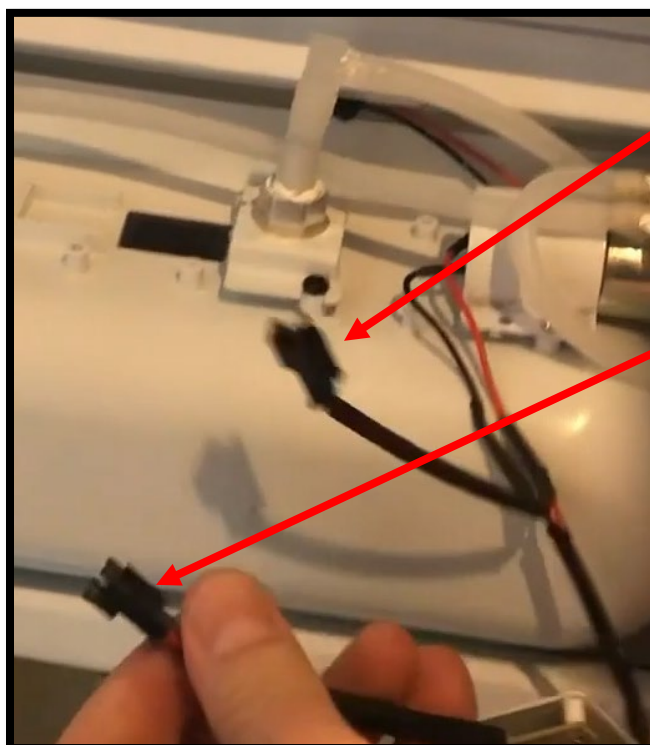
**Remove Sensor Assembly – Video Timecode 03:00**

Using a #2 Philips head screwdriver, remove the two screws securing the sensor assembly.



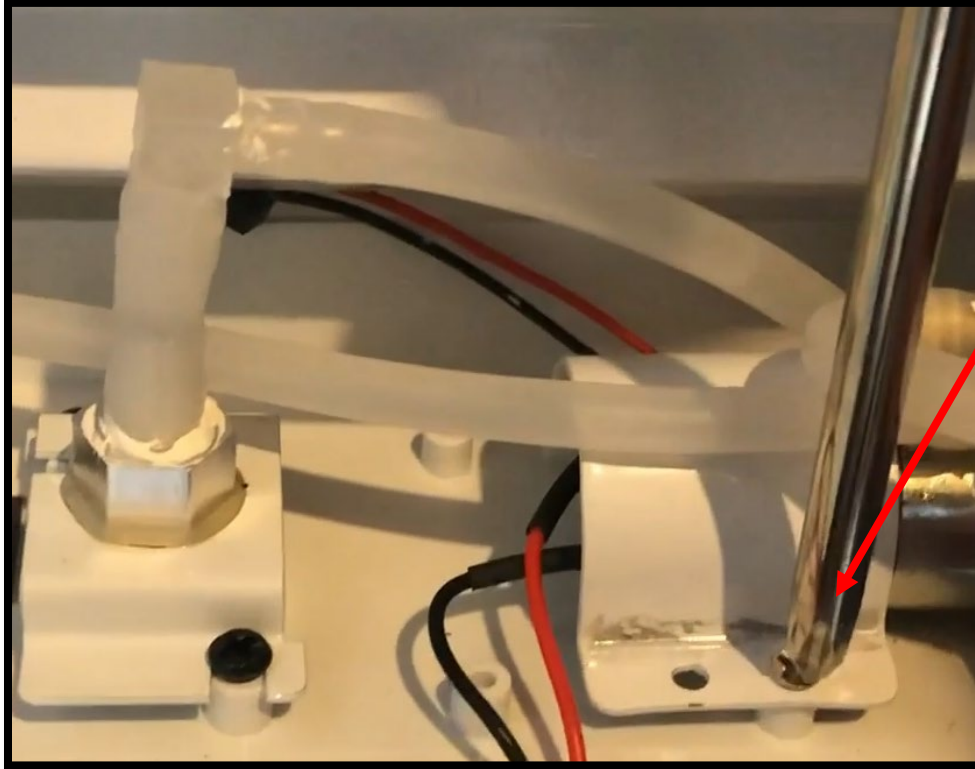
**Disconnect Wiring Harness – Video Timecode 03:20**

Disconnect the sensor assembly wiring harness.



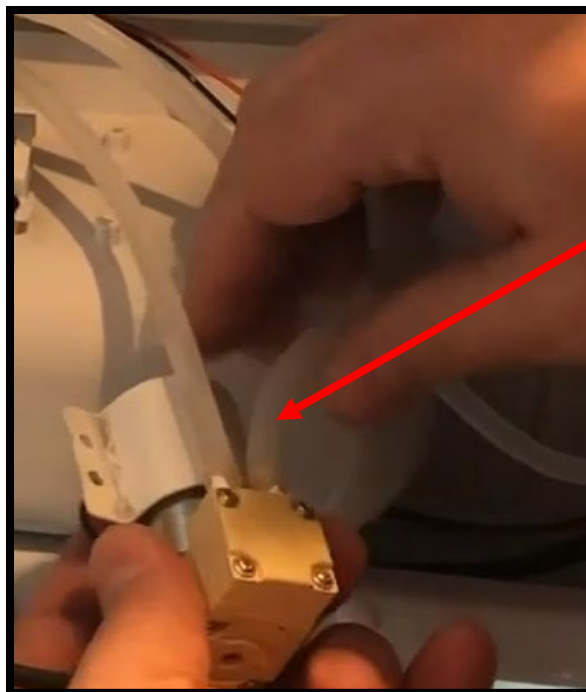
**Remove Pump Assembly – Video Timecode 3:39**

Using a #2 Philips head screwdriver, remove the two screws securing the pump assembly. There is one screw in the front as shown in the picture and one screw in the back behind the pump.



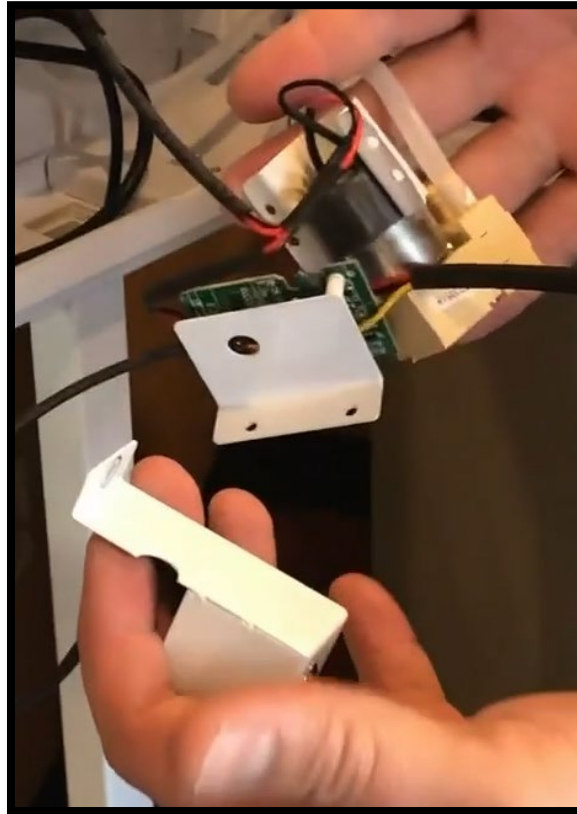
**Disconnect Hand Sanitizer Output Hose – Video Timecode 04:23**

Disconnect the hand sanitizer output hose from the pump assembly.



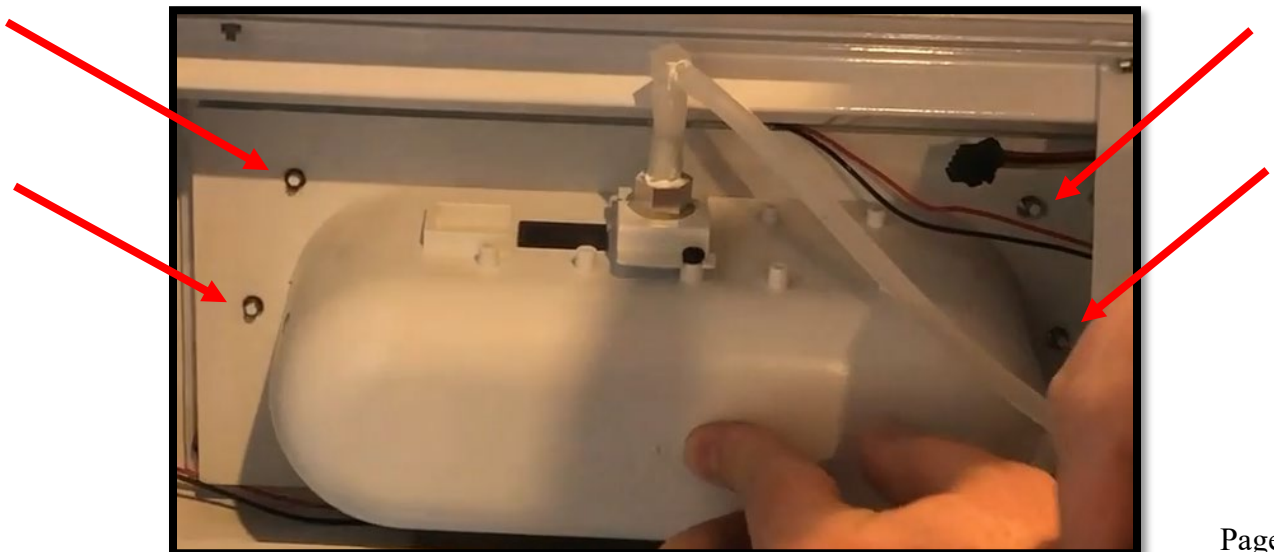
## Remove Pump Assembly, Sensor Assembly, and Button Assembly – Video Timecode 04:38

If your Clean Hands Kiosk hand sanitizer reservoir is full of hand sanitizer, remove the pump assembly, sensor assembly, and button assembly leaving the hand sanitizer input hose connected to the pump assembly as to not leak hand sanitizer. If the reservoir is empty go ahead and remove the input hose and discard the old parts.



## Reinstall Dispenser Assembly – Video Timecode 04:47

Reinstall the dispenser assembly. Using the 7mm socket, replace all 6 nuts to secure the dispenser assembly. There are 3 nuts on each side. The two button nuts are not visible in the picture below.



**Remove Plate – Video Timecode 05:31**

Using a 7/32 socket, remove the plate as show in the picture below. Replace the nut on the standoff once the plate has been removed.



**Disconnect Dispenser Hose – Video Timecode 06:14**

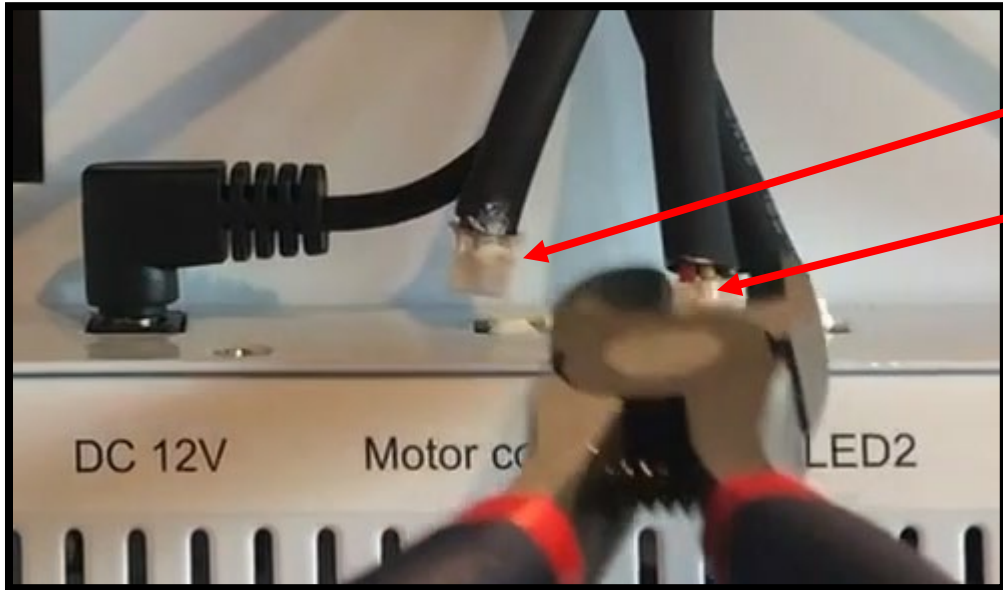
Disconnect the dispenser hose and remove the remaining parts.





## Remove Motor Control and LED1 Wiring Harness – Video Timecode 06:26

Clip any existing zip ties securing the wiring harness for Motor Control and LED1. Remove these two wires from the kiosk. New wiring included with the retrofit kit will be installed.



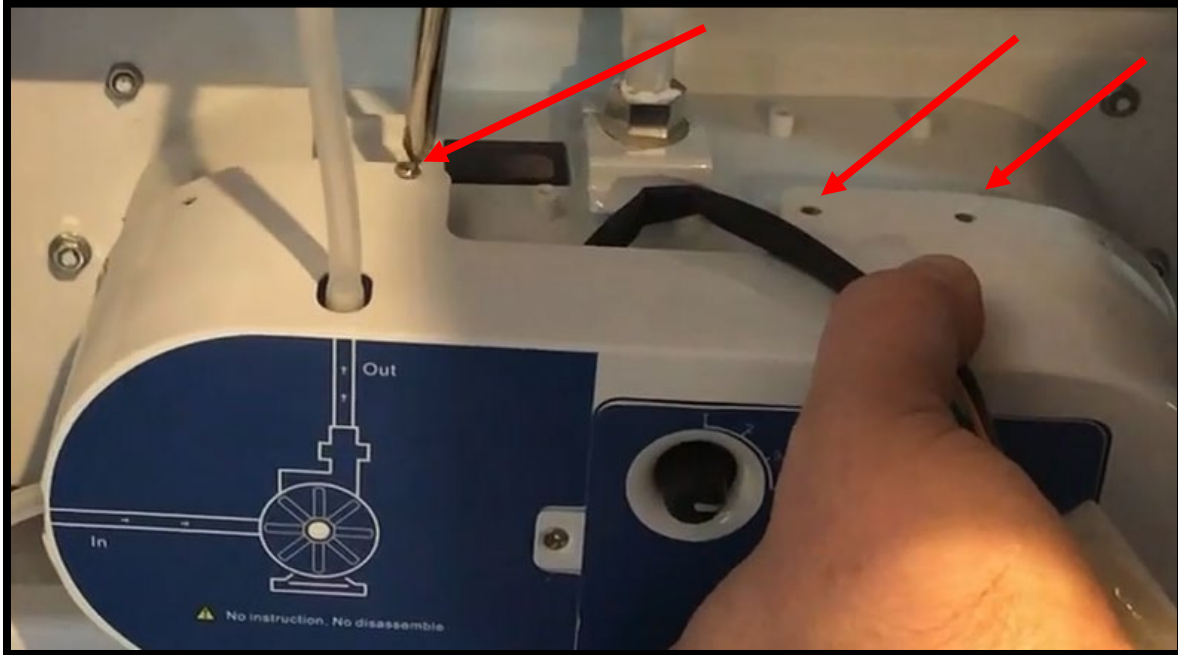
## Disconnect LED1 from LED Array – Video Timecode 08:40

Using regular pliers and needle nose pliers, disconnect the LED1 wire from the LED array next to the dispenser assembly. Discard the wire once removed.



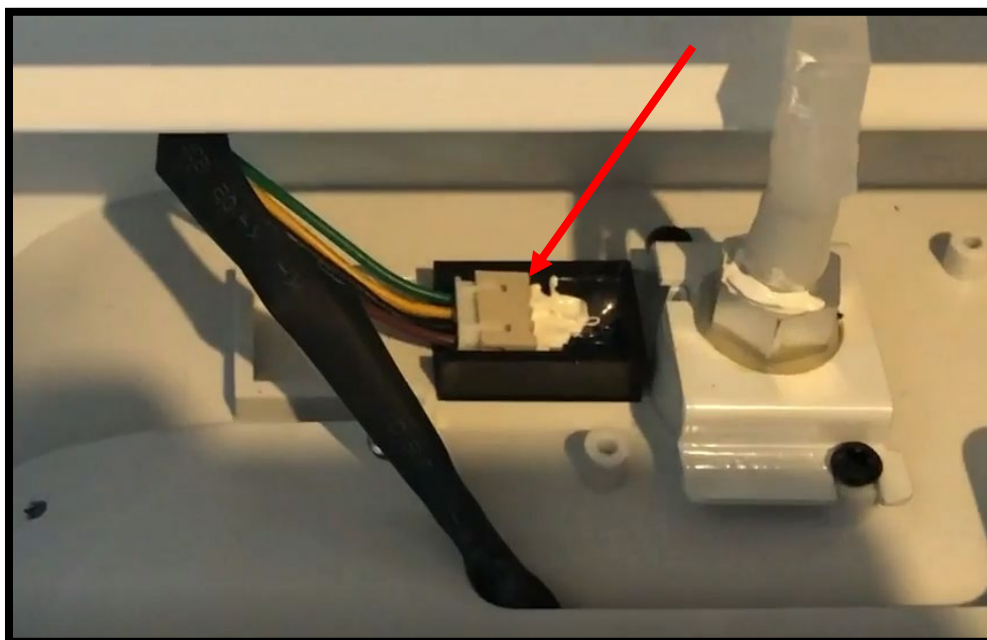
## Install New Pump Assembly – Video Timecode 09:36

Using a #2 Philips head screwdriver, install the new pump assembly. Secure it using the 3 screws leftover after removing the old components.



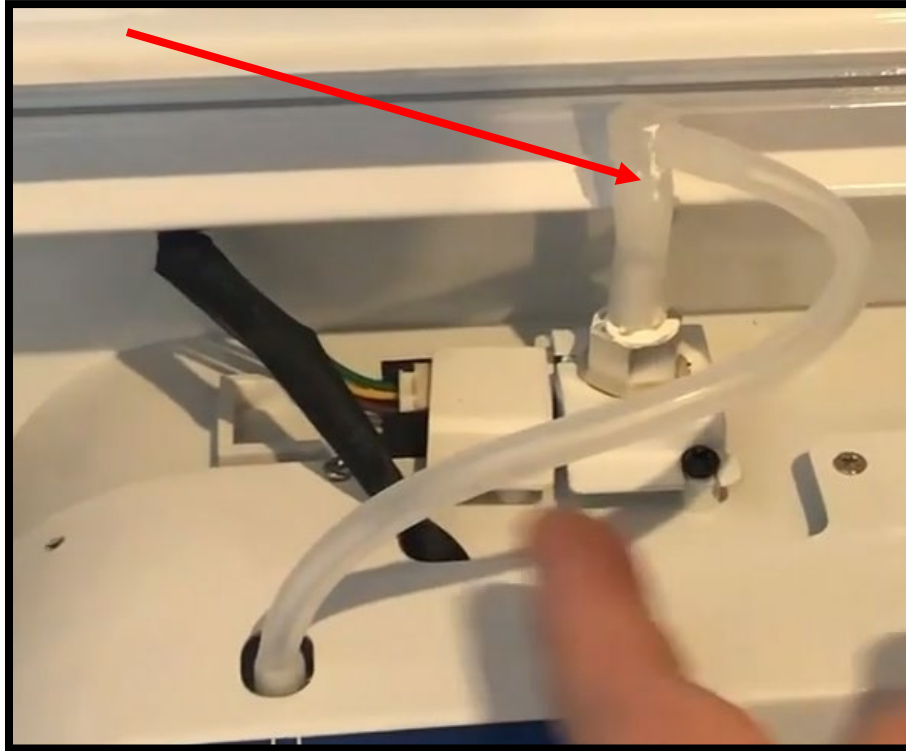
## Install Sensor – Video Timecode 11:20

Install the new sensor by pressing it into place using firm pressure. Then install the retaining bracket.



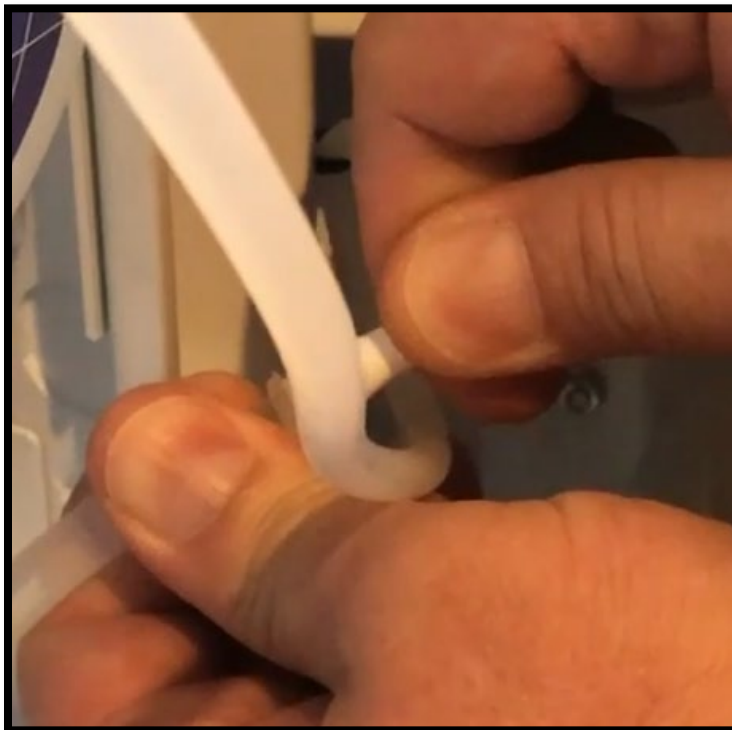
**Attach Output Hose to Dispenser – Video Timecode 12:39**

Connect the hand sanitizer output hose to the dispenser nozzle.



**Disconnect Supply Line – Video Timecode 13:36**

Disconnect the supply line from the reservoir. Remove and discard the old parts.



**Connect New Supply Line – Video Timecode 15:04**

Connect the new supply line to the reservoir.



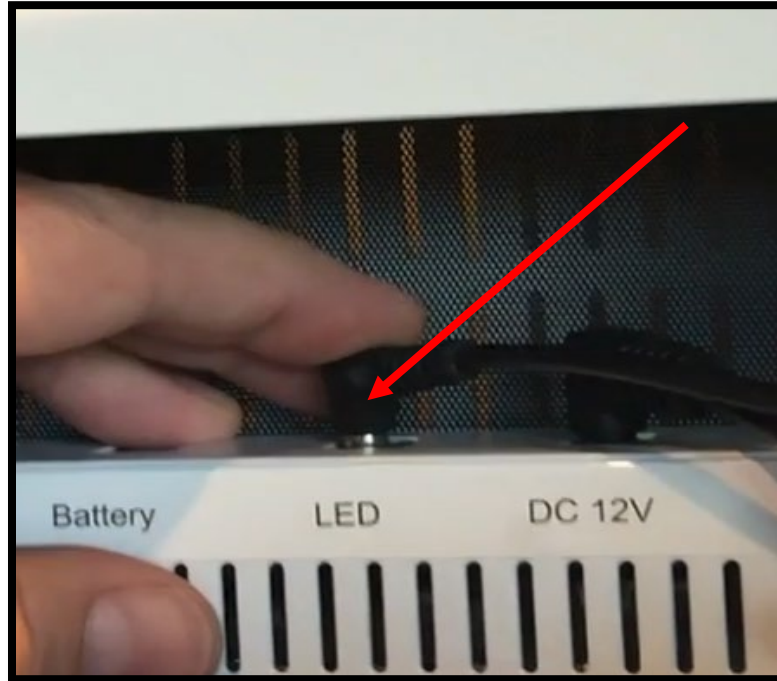
**Connect New LED Wiring Harness – Video Timecode 15:39**

Connect the new LED wiring harness to the LED array.



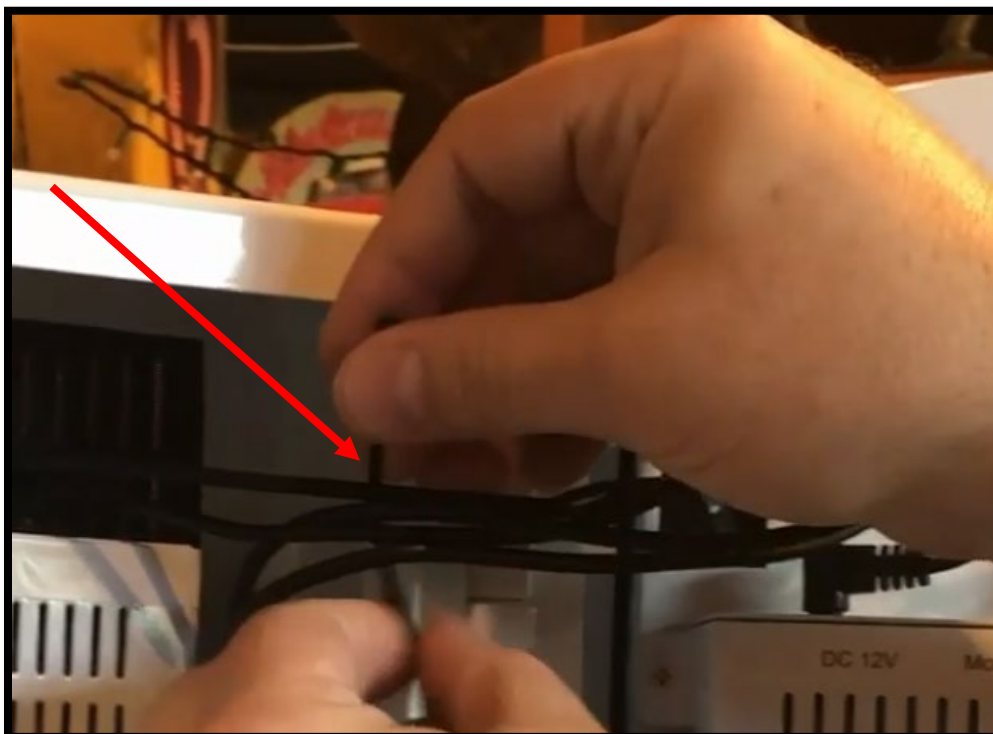
**Install Power Supply Wiring Harness – Video Timecode 17:13**

Run the long power supply wiring harness up the side of the kiosk, across the top and connect it to the LED port.



**Cleanup Wiring – Video Timecode 17:53**

Using zip ties and cable holds, cleanup and secure any loose wiring.



## Prime New Pump – Video Timecode

Prime the new pump with hand sanitizer by cycling the pump a few times. You may need to trigger the pump 5 to 10 times to get a proper dose of hand sanitizer. Adjust the dosage amount by setting the dial to the desired setting. See the table below.

Dial Setting	Dosage
1	.3 ml
2	.8 ml
3	1.7 ml
4	2.6 ml

