

# CLEAN HANDS KIOSK



## DIGITAL SIGNAGE HAND SANITIZER KIOSKS USER MANUAL (Standard Model)

# CONTENTS

<b>SUBJECT</b>	<b>PAGE</b>
1. Technical Specification	3
2. Parts and Mounting	4
- Packing List	4
- Steps for Mounting (Wall Mounted)	4
- Steps for Mounting (Freestanding)	5
3. Using the Display for the First Time	6
- Screen Checks	6
4. Remote Control	9
5. USB plug and play media Player Instructions	10
6. Basic Settings	10
7. Disk Auto Copy Function	11
8. Time Setting	11
9. Text Setting	13
10. Display Setting	14
11. How to Make a Logo File	15
12. Play Log	15
13. How to Make a Playlist	16
14. File Requirements	18
15. Content Requirements	19

## Technical Specifications

<b>MODELS</b>	CH-HSD-22W (Wall Mounted) CH-HSD-22F (Freestanding)
<b>PANEL</b>	
Max Resolution	1080 x 1920
Aspect Ratio	9:16
Pixel Pitch	0.24825 x 0.24825
Viewing Angle	89/89/89/89
Contrast Ratio	3000:1
Brightness	500cd/m <sup>2</sup>
Response Times	14ms
Dimensions (W x H x D)	14.35" x 29.5" x 2.75" (Wall Mounted)
	14.35" x 70.9" x 2.75" (Free Standing)
Weight	57.3 lbs (Wall Mounted)
	83.8 lbs (Freestanding)
Sanitizing Volume	5000ml = 5000 uses per refill
<b>INPUT PORTS</b>	
USB 2.0	X2
HDMI	X1 <i>(Standard Model Only)</i>
SD	X1
RJ45	X1
<b>SUPPORTED MEDIA</b>	
Video	RMVB, FLV, MPEG1/2/4, AVI, DIVX, XDIV, WMV9, H.264
Image	PNG/GIF/JPEG
Audio	MP3, WMA, WAV
<b>GENERAL</b>	
Material	Metal
Color	White
Certification	CE/ROHS/FCC
24/7 Operation	Yes

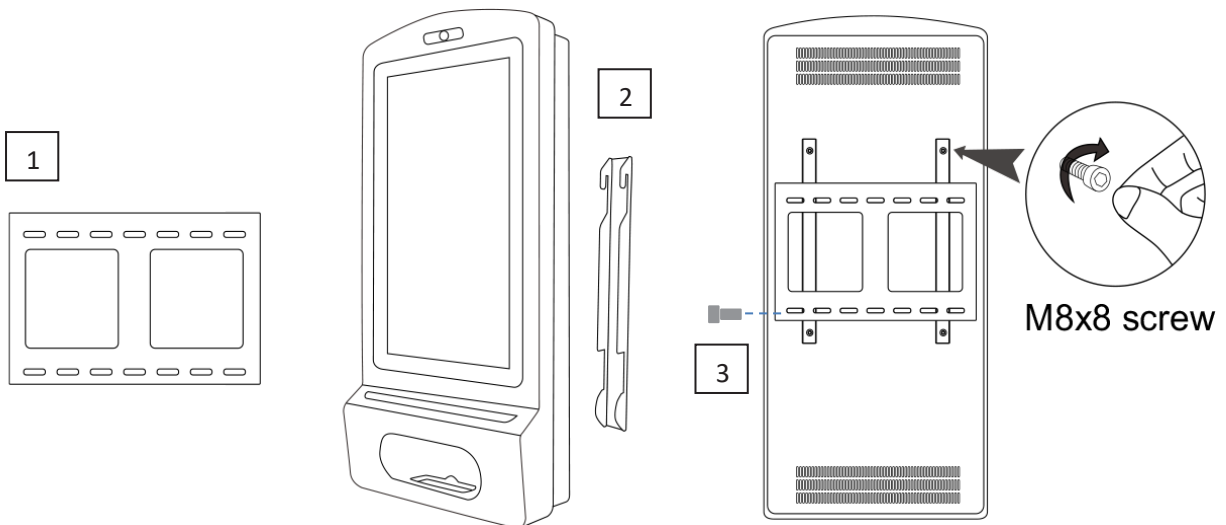
## PARTS AND MOUNTING

Wall Mounted
1x Power Cord
3x Keys
1x 6mm Allen Wrench
2x M4x30 screws

Freestanding
1x Power Cord
4x Keys
1x 6mm Allen Wrench
6x M8x25 screws
4x Foot Pad

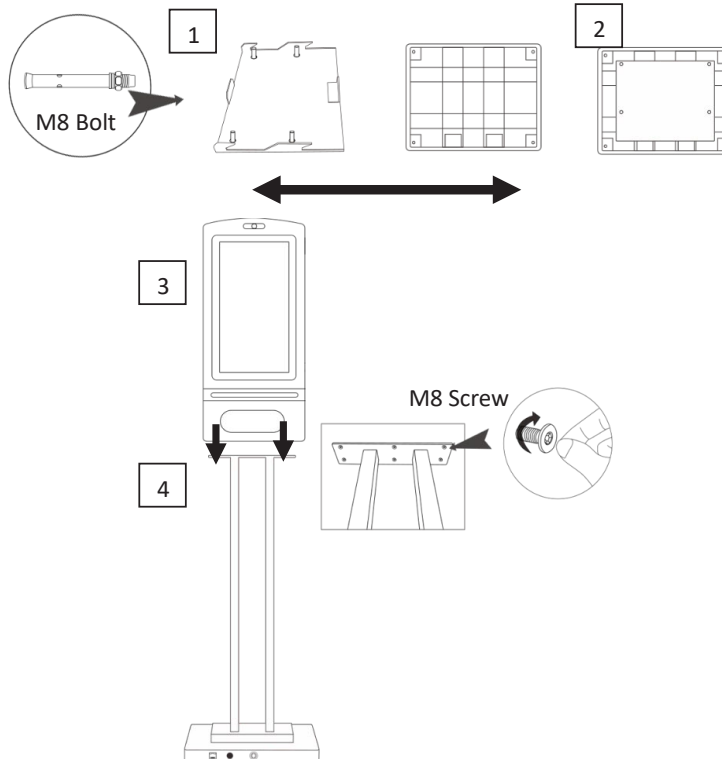
### Steps for Mounting – Wall Mounted

1. Securely fix the wall bracket onto the back of the screen.
2. Using two people, lift the display onto the bracket.
3. Screw the small fixing screw into the side of the bracket to lock the screen in place.

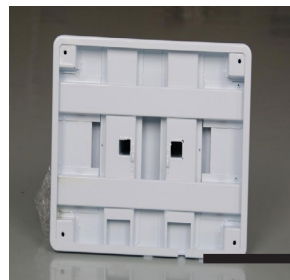


# STEPS FOR SET-UP — FREESTANDING

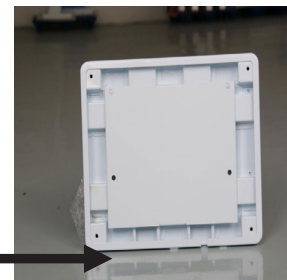
1. Place the floor plate in location and bolt to the floor using M8 Bolts.
2. Slide Floor stand onto floor plate and screw in place.
3. Using two people, carefully lift the display onto the floor stand.
4. Use M8 screws to secure the frame into the bottom of the screen.
5. Lock Stand to Base tightly with the key.



1) Bolt Plate to floor



2) Slide floor stand onto floor plate



5) Lock Stand to Base tightly with the key

**NOTE – we strongly advise that the display stand is securely bolted to the floor prior to operation to avoid injury.**

# USING THE DISPLAY FOR THE FIRST TIME

## Screen Checks

### 1. Powering on the Display and Checking the Volume Indicator.

Power on the display. The sanitizer volume indicator should display as red.



### 2. Checking Dispenser Border Light.

The dispenser border light should display as blue when not in use. Place your hand in the dispenser to activate the sensor. A click should be heard and the border light should change to green.

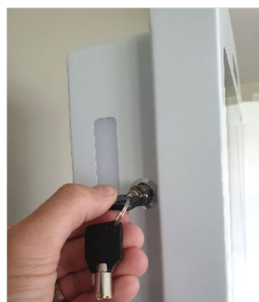


### 3. Deciding What Type of Sanitizer You Want to Use.

Before use, please decide whether Liquid or Gel Sanitizer will be used.

### 4. Opening the Unit.

Use the keys provided to open the two locks on the side of the unit and carefully open the display



### 5. Liquid Sanitizer

If you are using liquid sanitizer, ensure that the button highlighted below is pressed **IN**.



Ensure the following dispenser head is being used for **Liquid Sanitizer**:



### 6. Gel Sanitizer

If you are using Gel sanitizer, ensure that the button highlighted below is pressed **OUT**.



Ensure the following dispenser head is being used for **Gel Sanitizer**:



**NOTE – to change the dispenser, simply unscrew and replace.**

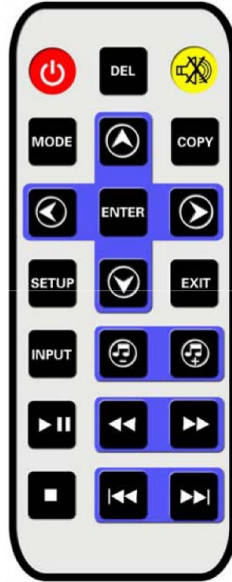
### 7. Pour in your Sanitizer














Unscrew the blue cap and carefully pour in your preferred sanitizer.





## REMOTE CONTROL



	Power on/off button
	Mute button to control sound on/off
	Mode swift
	Copy function
	STOP Button
	Enter main menu setup
	Exit button
	Up navigation button
	Down navigation button
	Left navigation button
	Right navigation button
	Enter button
	Vol+

	Vol-
	Play/pause
	Fast forward
	Fast Backward
	Next
	Previous

**NOTE - Remote control only works with door open and remote pointed inside the cabinet.**

# USB PLUG AND PLAY MEDIA PLAYER INSTRUCTIONS

## PRODUCT OVERVIEW

Available as a wall mounted or freestanding display, the TOPAZ 22" Gold Hand Sanitizer display has been designed to be identical in design as its 'big brother' the 22" Platinum model, whilst keeping content updating simple via USB helping to deliver a highly cost effective option. Still featuring a full HD 1080p display, toughened glass and waterproof casing this is perfect for anyone that doesn't require the Android OS.

## BASIC SETTINGS



### Language

English and Chinese

### Auto Play

On/Off (On in default)

### Media Type

All/Movie/Photo/Music/Photo+Music (All in default)

### Play mode

Repeat all/Repeat 1/Repeat none

### Play Log

On/off (off in default)

### Play Record

Off/3s/5s/8s/10s/15s/20s (3s in default)

### Slide Mode

On/off (off in default)

### Slide Time

3s/5s/8s/10s/15s/20s/25s/30s/40s/50s/60s (3s in default)

### Photo Rotate

Normal/90 Degree/180 degree/270 Degree

### Min Volume

0

### DISK AUTO COPY FUNCTION

1. Insert an SD Card into the player.
2. Please enter the menu, then choose **Copy Type** and **Copy Device**. Select the SD Card. Exit the menu.
3. Insert your USB stick (with required content) into the player. The player will copy the files in the USB Disk onto the SD Card automatically, After the auto copy has completed, the player will restart automatically to play the copied files.
4. Remove the USB..

### Copy Type

Manually update/Fully update/Overlap update/Append update

### Copy Device

B2A (USB→SD/CF) /A2B (CF/SD→USB) ,  
Please choose B2A for default options

### TIME SETTING



**Current Clock**



Year/Month/Date/Hour/Minute/Sec.

**Clock show** OFF/HM/HMS/YMD\_HM/YMD\_HMS/YMD\_W\_HM/YMD\_W\_HMS (HM in default)

**Clock Text Color**

White/Black/RED/BLUE/YELLOW/GREEN/GREY(White color in default)

**Clock Position**

Right-TOP/Left-Top (Right-Top in default)

**Timer Mode**

Every day/Every week

**Timer Set**



Timer 0-Timer 4

### TEXT SETTING



#### Roll Text

On/Off(off in default)

#### Text Color

White/Black/RED/BLUE/YELLOW/GREEN/GREY(White color in default)

#### BG (Text background ) Color

Transparent/White/Black/RED/BLUE/YELLOW/GREEN/GREY(Transparent in default)

#### Roll Speed

Low/Middle/High(Middle in default)

#### Logo Setup



On/off ( off in default)

#### Logo on Time

3S/5S/8S/10S/15S/20S/25S/30S/40S/50S/60S) (3S in default)

#### Logo off Time

(0S3S/5S/8S/10S/15S/20S/25S/30S/40S/50S/60S) (3S in default)

#### Set Password

Setup menu password, use VOL-, VOL+, |, |, button to make setup

#### Key Lock

On/off

### DISPLAY SETTING



#### Brightness

0~100 (50 in default)

#### Contrast

0~100 (50 in default)

#### Color

0~100 (50 in default)

#### Sharpness

0~100 (50 in default)

#### Color Temp RED

0~148 (125 in default)

#### Color Temp Green

0~148 (128 in default)

#### Color Temp Blue

0~148 (135 in default)

#### Noise Reduction

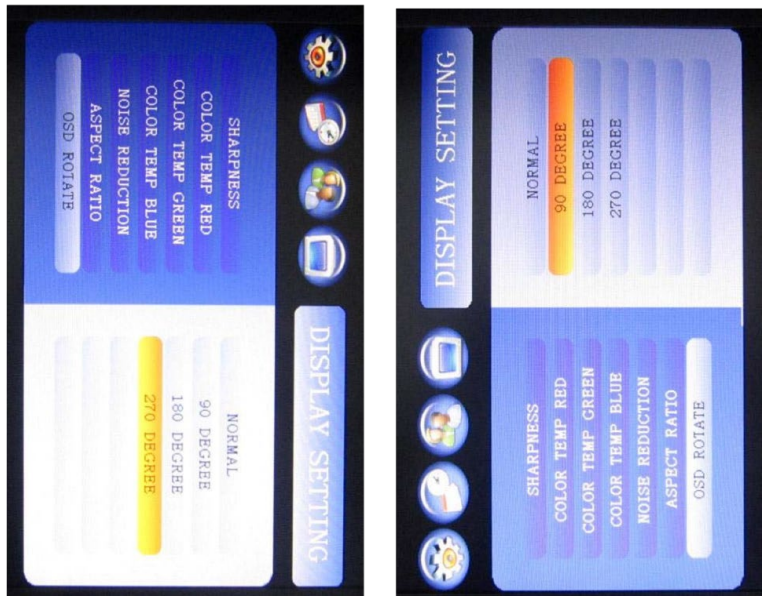
OFF/Low/Middle/High/Default

#### Aspect Ratio

Just Scan/Auto/4:3/16:9/Panorama

### OSD Rotate

Normal/90°/180°/270°



### HOW TO MAKE A LOGO FILE

1. Choose one JPG file to use as a Logo file (resolution of 120x60), named as JIAOBIAO.LOG



JIAOBIAO.LOG  
49 KB

2. Copy this file into the root directory of the memory card. (Note: Please switch Logo setup option to “on” mode)

### PLAY LOG

1. In the Basic settings menu, please switch Play Log to “on” mode
2. You will then find the LOG.TXT file in the root directory of memory card.



LOG.XLS  
Microsoft  
2 KB

3. After opening the file, it will display the below information as below

Date	Time	FileName	Status
2020-6-5	14:21:03	2308.jpg	Succeed!
2020-6-5	14:21:08	1280x720.jpg	Succeed!
2020-6-5	14:21:13	Test.jpg	Succeed!
2020-6-5	14:21:18	2308.jpg	Succeed!
2020-6-5	14:21:23	1280x720.jpg	Succeed!
2020-6-5	14:21:28	Test.jpg	Succeed!
2020-6-5	14:21:33	2308.jpg	Succeed!

**Date:** play date

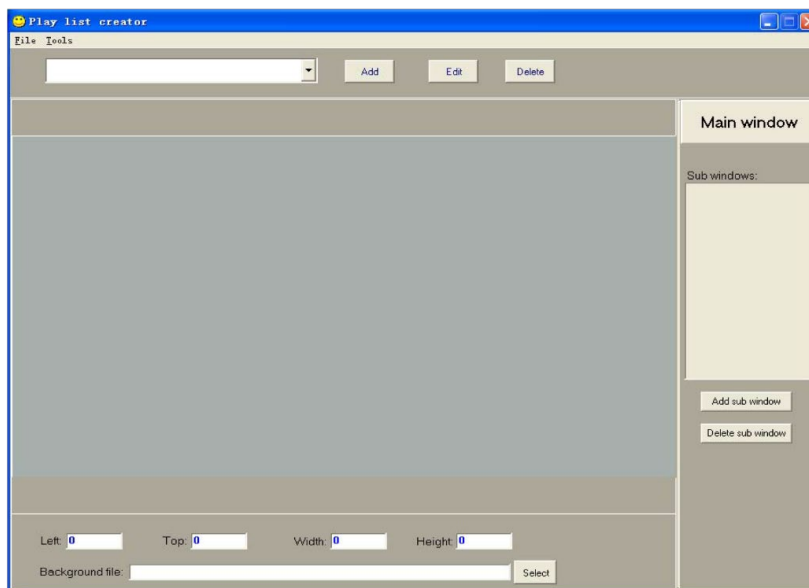
**Time:** play time

**File Name:** file that was played

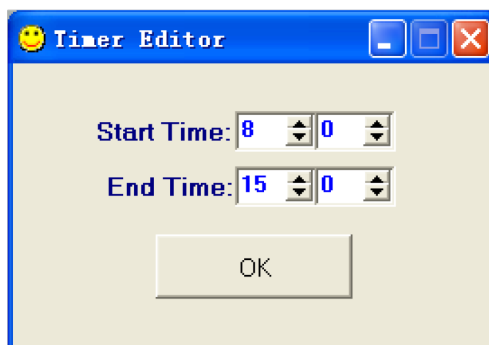
**Status:** play status (Succeed / Failure)

### HOW TO MAKE A PLAYLIST

1. Open  Listtool.exe program to see the below:



2. Click **Add** to setup the time as below:



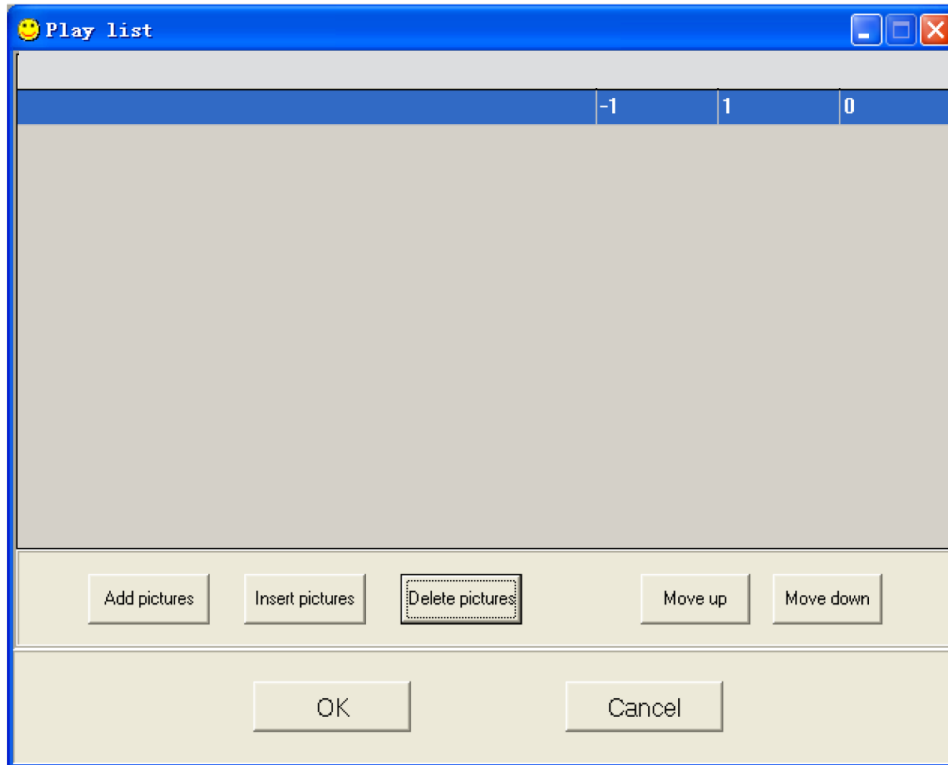


**Note:** 9 groups time could be setup.

**Edit:** Edit time

**Delete:** Delete time

3. Select Main window as in the picture below:



4. Add in your content, and adjust the settings as required then select **File -> Save**
3. Save as **PLYLST.PLY** format and Copy this file into the root directory of the memory card.

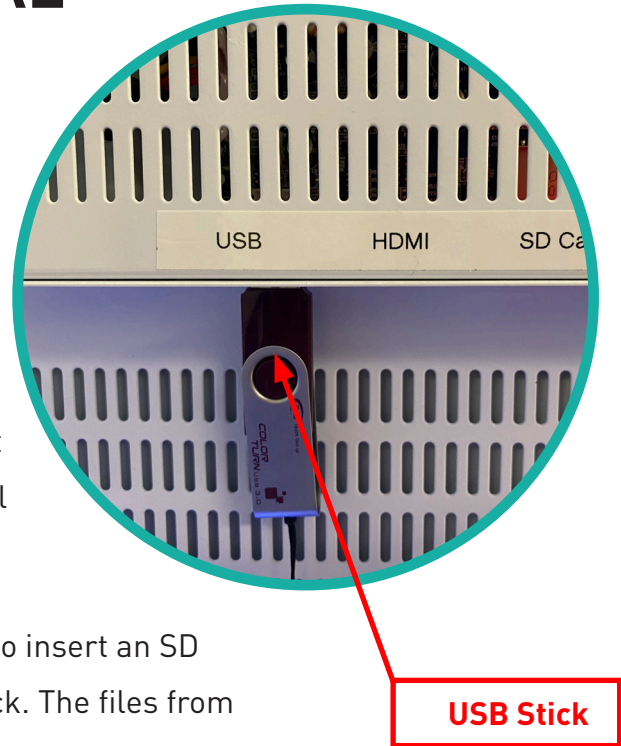
# UPLOADING CUSTOM DIGITAL SIGNAGE CONTENT

Copy digital signage files to a USB 2.0 memory stick. i.e. JPG, PNG and MP4 for video, etc. at 1080 x1920 resolution. **See Page 2 for more details.** All files should be placed in the ROOT directory of the USB.

Insert the USB 2.0 memory stick into the available USB port and lock the display (content is not autosaved to the internal memory and the USB is required to stay in the unit).

If you prefer to transfer the files to the kiosk, you will need to insert an SD Memory Card into the SD Card Slot, then insert the USB stick. The files from the USB will then be transferred to the SD Card, and you may remove the USB upon completion of transfer.

Digital Content will auto play and rotate across the screen.



## File Specifications

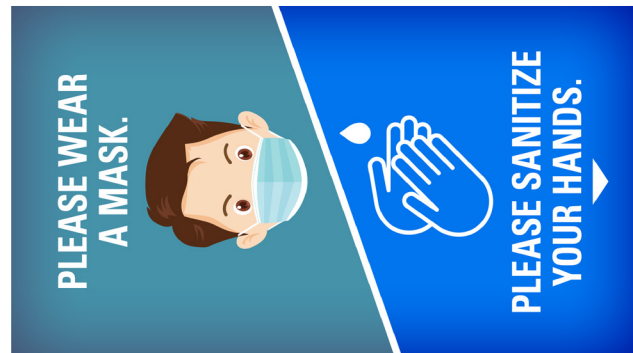
FORMAT	
Video	MPG, MPG-1, MPG-2, MPG-4, AVI, MP4, DIV, TS, TRP, WMV, M2TS, MKV, RM, RMVB
Image	PNG, BMP, JPEG
Audio	MP3, WMA, WAV
VIDEO ENCODE	
Max Resolution	1080 x 1920 @60Hz
Max Color	24bit
Max Framerate	30fps
Max Stream	USB 2.0 Device: 20Mbit/sec
AUDIO ENCODE	
Sampling	32kHz, 44.1kHz, 96kHz
Bit Rate	32kbps to 448kbps

Due to being a plug and play model with no OS, the digital display can only play content in landscape orientation. Therefore, any content needs to be created in Portrait orientation, then rotated 270° clockwise or 90° counter-clockwise.

Original content created  
portrait orientation  
(1080 x 1920 pixels)




Content rotated  
270° clockwise / 90° counter-clockwise



**Free Digital  
Content Available**

[www.CleanHandsKiosk.com/downloads](http://www.CleanHandsKiosk.com/downloads)

### HOW TO ROTATE A VIDEO?

1. In Windows 10, open the Video Editor app.
2. Click New Video Project.
3. Type the name of your new video and click OK.
4. Add your video to the Project Library.
5. Check the video and click Place in STORYBOARD.
6. Press the rotate button  or (CTRL + R) three times.
7. Click Finish Video.
8. Choose your Video Quality and click Export.
9. Choose the location to save to and press Export.

OR, visit [www.rotatevideo.org](http://www.rotatevideo.org) to upload your video to rotate.